

XP-M1000 Reader Features

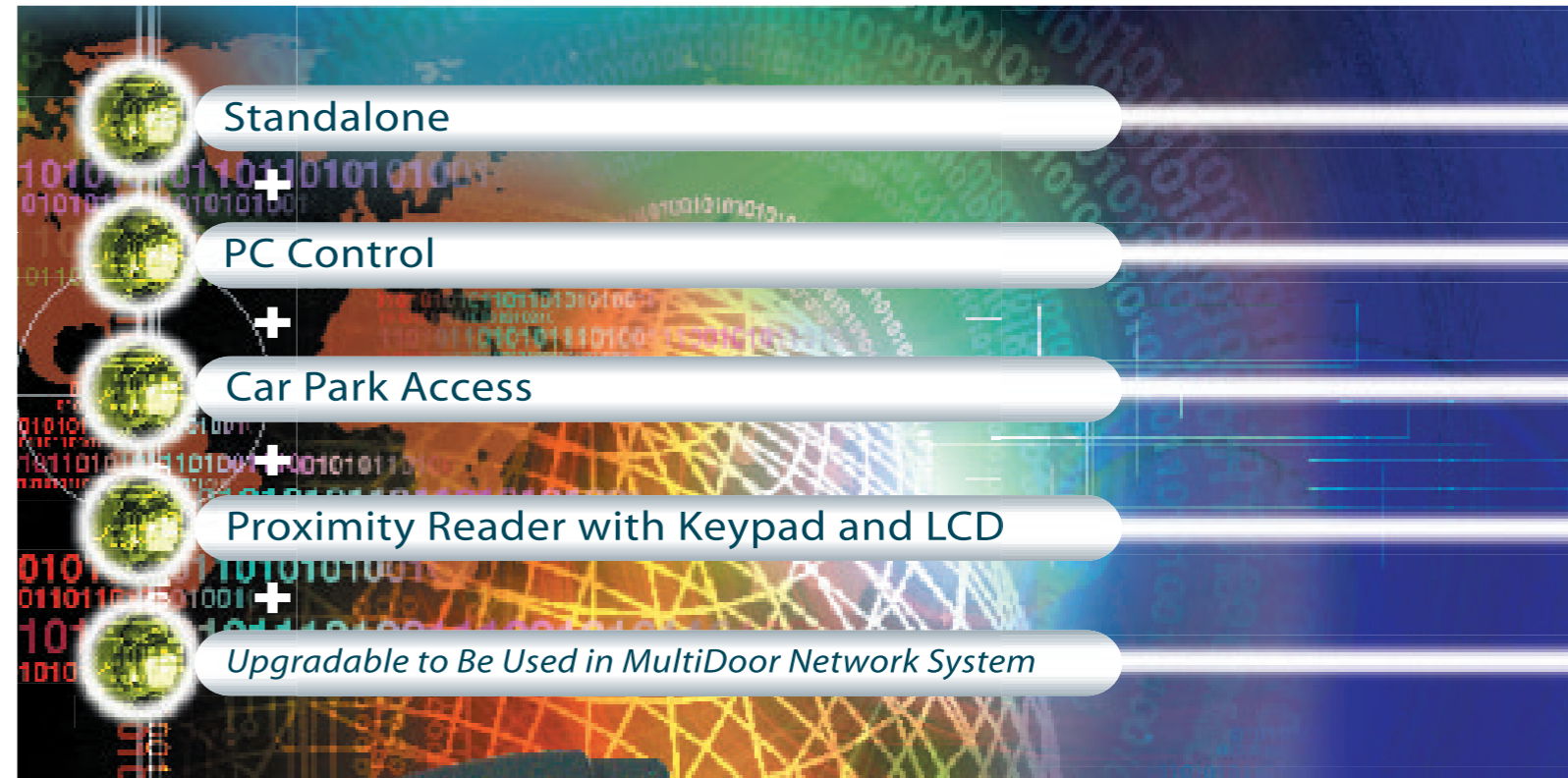
Item	Feature	Function
1	Card User Memory	1000 (2000 in Car Park Access Mode)
2	Transaction Records	10000 (5000 in Car Park Access Mode)
3	Time Set	50
4	Time Zones	50
5	Holiday Dates	30
6	Built-In Real Time Clock	Yes
7	Keeps Data and Clock Even Power Fails	Yes (Data Up to 5 years / Time Up to 2 weeks)
8	Single Unit Reader, Keypad and Controller	Yes
9	Support Entry Reader	Yes (Car Park Access Mode)
10	Support Exit Reader	Yes
11	Support Exit Push Button	Yes (with Time Zone Control)
12	Support Wiegand 26 bit Reader	Yes
13	Support Antipassback	Yes
14	Access Operation Mode	Card Only, PIN Only, Card + PIN
15	Controller Operation Mode	1. Access Control 2. Time Attendance 3. Car Park
16	Auto PIN	10 Sets
17	Support Programming Through Keypad and LCD at the Reader	Yes
18	EEPROM Memory	160KB
19	Lock Control and Door Sensor Input	Yes (Through MAS-RBS Located Inside the Door)
20	Firmware Flash Memory	Yes
21	Onboard Buzzer	Yes
22	Communication Ports	RS232 or RS485
23	Configurable Lock Release Time	Yes (0-99 secs)
24	Configurable Door Open Time	Yes (0-99 secs)
25	Auto Lock Release Time Zone	Yes
26	Sensor and Output	Yes (with External Mio-44, 4 In 4 Out Card)
27	Power	12VDC
28	Can be Linked to PC for Software Control	Yes Use xPortal2005 Requires MCI-XPC2005/s or MCI-XPC2005 for distance longer than 50 feet or more than 1 unit of XP-M1000/XP-M1000X
29	Upgradable	Yes Can Upgraded for Use with Multi-Door XP-CPRO Controller, MK-800 Reader Interface and xPortal2005 System which Support up to 128 doors.

xPortal2005 Software Features

Item	Feature	Function
1	Operating System	Windows XP Home, XPPro, NT4, 2000 or Compatible (Microsoft .Net Framework v1.1 Required)
2	Max No. of Doors	1 (Direct RS232) 16 (with one MCI-XPC2005 or MCI-XP C2005/s Using RS485 MultiDrop) 128 (Maximum Configuration with Multiple Units of MCI-XPC2005 or MCI-XPC2005/s)
3	Controller Supported	MicroEngine's XP-M1000, XP-M1000X, XP-CPRO Multi-Door Controllers
4	Card Holder	2000
5	Transaction Records	Limited by Disk Space
6	Time Set	255
7	Time Zones	255
8	Holiday Dates	30
9	Access Levels	255
10	AntiPassback	Yes
11	Automatic Transaction Retrieval	Yes
12	Password Controlled Software User	Yes
13	User Defined PIN Selection	Yes
14	Daily Attendance Reporting	Yes - Simple Single Day Daily Mode Late-In, Absent, Total Work Time, OT
15	Monthly Attendance Reporting	Yes - Summary of Attendance Status
16	Who's Still In Report	Yes (Multiple Door Selection)
17	Menu Accessibility Control	Yes
18	Dynamic Floor Plan	Yes
19	Online Events Viewing	Yes
20	Online Help	Yes
21	Controllers Supported	XP-M1000, XP-M1000X, XP-CPRO
22	Database	MS Access
23	Using Microsoft .Net Framework	Yes (v1.1)
24	Multi-Workstation	Yes, 3 Clients (MCI-XPC2005)
25	Can be Linked to PC for Software Control	Yes Use xPortal2005 Requires MCI-XPC2005 or MCI-XPC2005/s for Distance Longer than 50 Feet or More than 1 Unit of XP-M1000/XP-M1000X

XP-M1000X System

Multi Function Access Control System



Ordering Information

Item	Product code	Description
1	XP-M1000	Proximity Reader with LCD and Keypad Built-In Controller Function, 1,000 Card Users, 1,000 Transactions, TimeKeeping C/W MAS-RBS Door Interface Unit
2	XP-M1000AB	ISO14443 A/B Serial No Reader with LCD and Keypad Built-In Controller Function, 1,000 Card Users, 1,000 Transactions, TimeKeeping C/W MAS-RBS Door Interface Unit
3	XP-M1000X	Proximity Reader with LCD and Keypad Built-In Controller Function, 1,000 Card Users, 10,000 Transactions, TimeKeeping C/W MAS-RBS Door Interface Unit
4	XP-M1000ABX	ISO14443 A/B Serial No Reader with LCD and Keypad Built-In Controller Function, 1,000 Card Users, 10,000 Transactions, TimeKeeping C/W MAS-RBS Door Interface Unit
5	XP-RDPRX	Proximity Reader
6	XP-RDMFX	ISO14443 A/B Serial No Reader with ABS Casing
7	Mio-44	4 In 4 Out Card
8	MCI-XPC2005/s	Standalone Software for Controlling up to 16 doors of XP-M1000, XP-M1000X, XP-CPRO Controllers
9	MCI-XPC2005	xPortal2005 Client/Server Software Main Signal Converter Unit. Max 3 Clients Max 128 Doors Max 8 Converter Unit Per Software (Control up to 16 Unit of XP-M1000 or XP-M1000X or XP-CPRO Controllers/Converter)
10	XPC2005-CLIENT	xPortal2005 Client Software Workstation License
11	MPS-320	3A Power Supply Unit with Low Power Cutoff
12	MPC-100	Proximity Card
13	MPC-51K	Mifare Standard 1KBit ISO Card
14	MV-25	LAN to RS485 Converter (UTP Ethernet 10BaseT with TCP/IP Protocol)
15	MV-26	Modem Interface Unit

Computer Requirements

Item	Function	Description
1	CPU	Pentium IV 1.7GHz or Higher
2	RAM	512 MB SDRAM or Higher
3	Harddisk	20 GB
4	Monitor	1024 x768 (65536 colors) Better
5	Peripherals	Mouse, Keyboard, LPT Printer Port, Serial Port
6	OS	Client/Standalone : Microsoft Windows ME/2000/XP or Compatible Server: Microsoft Windows 2000/XP Pro or Compatible
7	UPS	Recommended to Install

For enquiries, please contact:

Specifications subject to change without prior notice

• Flexible • Efficient • Expandable •



XP-M1000X System

Proximity Reader with Keypad and LCD and Built-In Controller

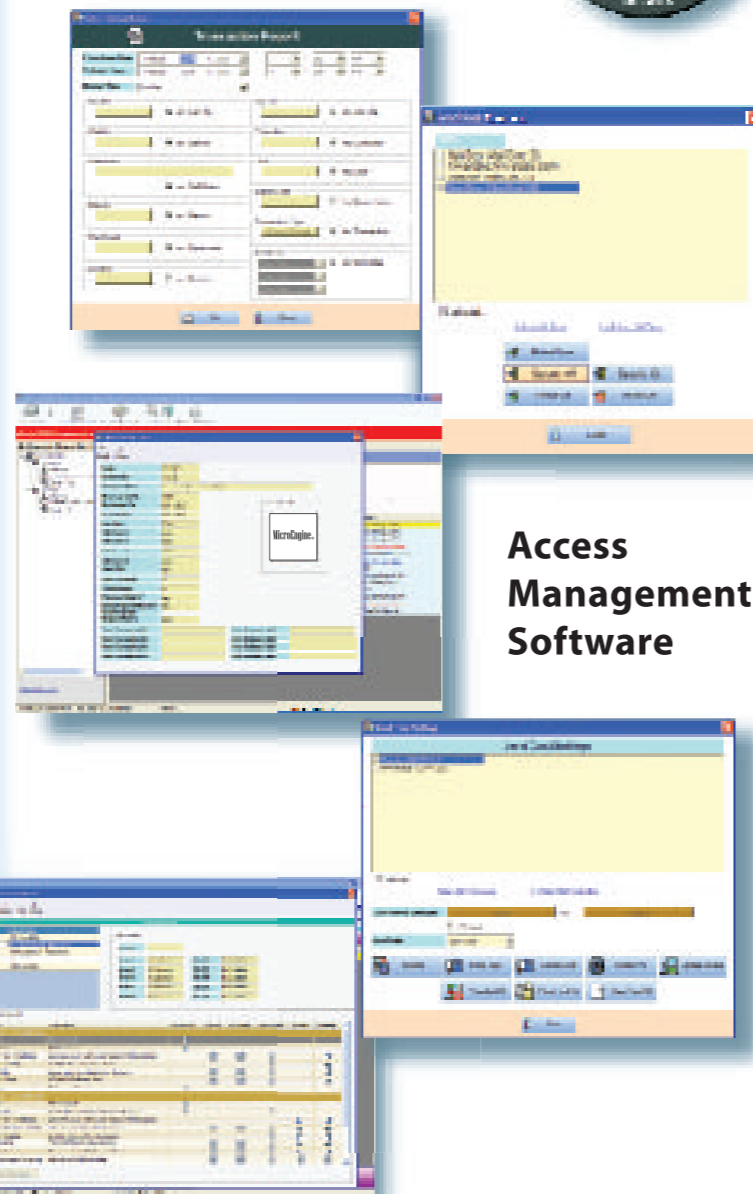
- Proximity Technology
- Reader Unit with LCD and Keypad
- Built-In Controller Function for Memory and Time Control
- Support Exit Reader Unit
- Support Time Set and Time Zones
- Support Transaction Recording
- LCD Reader Unit can be used as Exit Reader
- Support 1 IN and 1 OUT Reader (Car Park Access Mode)
- Support Car Park Vehicle Counting and Control (Car Park Access Mode)
- Support Car Park Full Sign Activation (Car Park Access Mode)
- Support Transaction Memory Retention (Time Attendance Mode)
- Support External I/O for Interfacing with CCTV / Sirens
- Keeps Transactions Data even Power Fails
- Can Program Directly at the Reader Keypad or from PC Software
- Can be linked to PC through LAN using MV-25 LAN Interface Unit
- Can be linked to PC directly through RS232 (1 Unit) or RS485 (max. 16 Unit per MCI or max. 128 Doors)
- Can be linked to the xPortalNet MultiDoor Controller through Interface for Larger Installation
- xPortal2005 Software with Access Management Automatic Data Collection, Time Attendance Function, Client-Server Version Available
- Suitable for Offices, Managed Residentials, Condominiums and Buildings.
- Mifare® (ISO 14443 A/B) Card Reader Version Available



XP-M1000X
Reader with Keypad
and LCD and
Built-In Controller.



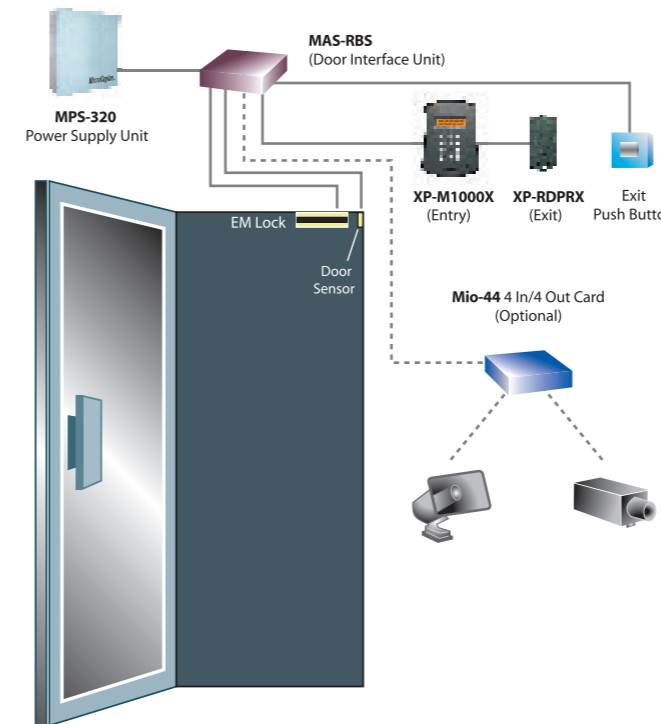
XP-RDPRX
Proximity Reader



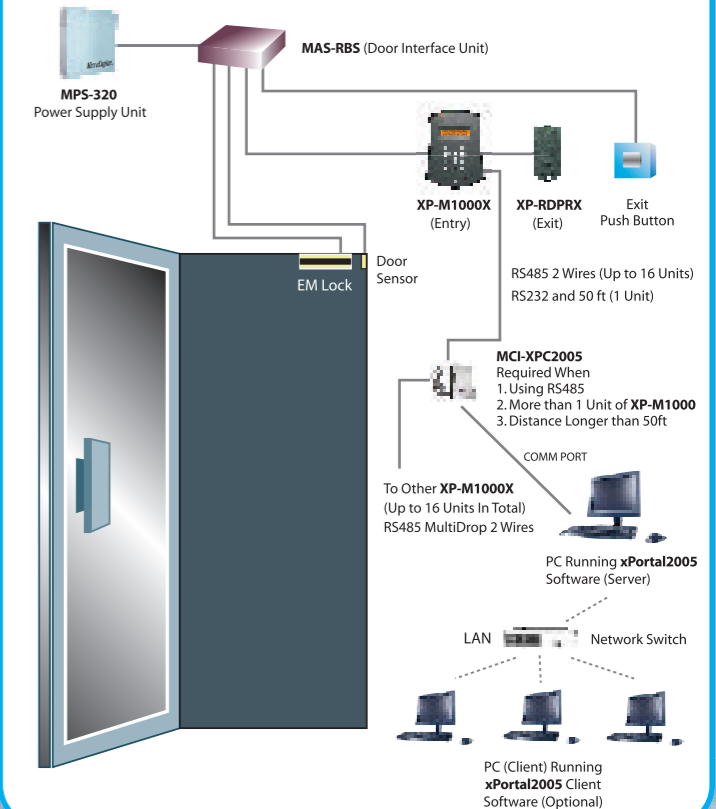
Access Management Software

Configuration Diagram

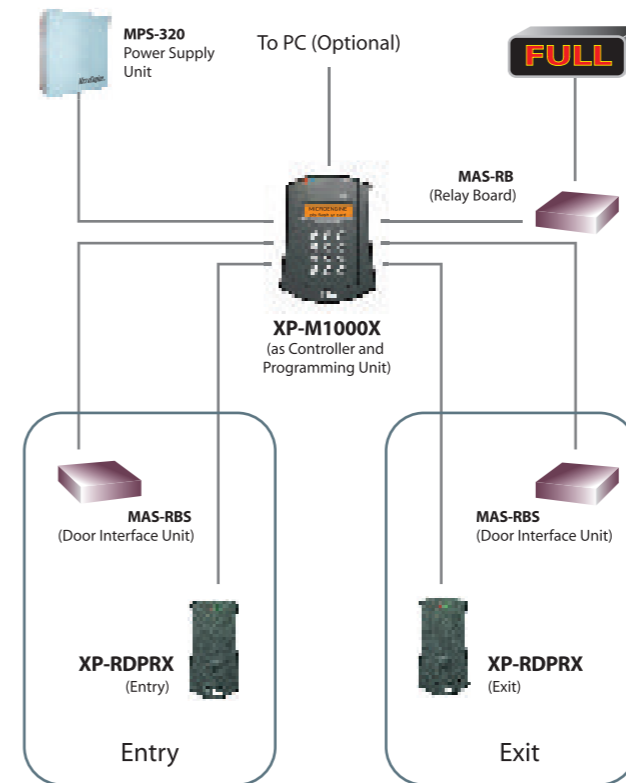
Standalone Configuration



PC Control Configuration



Car Park (2 Readers) Configuration



PC Control with LAN Connection Configuration

