

## 16 Channel MPEG4 Digital Video Recorder AHT-4016



The AHT-4016 is a powerful & reliable 16 channel MPEG-4 DVR built in with CD-RW / DVD-RW (Optional). Along with powerful networking features, AHT-4016 provides users with a host of functions along with the best advantages of MPEG-4 compression Digital Video Recorder.

### PRODUCT FEATURES

- MPEG-4 Video Compression
- Triplex – Simultaneous Recording / Playback / Network
- Multiplexing Operation – Individual Channel Recording / Playback & Setting Functions
- NaFS: Most Reliable File System to Minimize Data Loss
- RTOS: Real Time Operation System: Network, Live, Playback, Backup, Local HDD Recording, PTZ Control
- Central Monitoring Software
- 4 Channels Audio Recording
- USB Port / CDRW / DVDRW for AVI Video Backup (Optional)
- Easy Firmware Upgrade via USB and Network

### PRODUCT SPECIFICATIONS

<b>Video</b>	
Input	16CH (BNC), 1.0Vp-p, 75ohm
Signal Format	PAL
Video Outputs	Main Monitor – BNC x 1CH, 1CH S-Video, 1CH VGA 1.0Vp-p ± 0.2, 75ohm 16CH Loop-back, 1CH SPOT
Picture Refresh Rate	400FPS (16Ch)
Camera Installation	Plug & Play
Video Loss Check	Yes
Display Frame Rate	PAL: 25fps / channel (50 fields)
<b>Audio</b>	
Input / Output	4CH Line Input & 1CH Line Output
Audio Codec	6.711
<b>Alarm</b>	
Alarm Input	16 (NC/NO Selectable)
Alarm Output	4
Alarm Type	Alarm, Motion, HDD Error, Temperature, FAN Failure, Video Loss & ABCD
<b>Recording</b>	
Compression	MPEG-4
Multi-Operation	Triplex (Playback / Record / Network)
Recording Resolution & Rate	Max 100FPS @ 352 x 288 (CIF) MAX 25FPS @ 704 x 576 (D1)
Recording Quality	10 Grades
Recording Mode	Continuous / Schedule / Event / Manual
Motion Detection	Grid-Form
Pre & Post Recording	Yes

Specification is subject to change without prior notification

## Playback

Multi-Decoding  
Playback Speed Adjustment

1, 4, 9, 16 & PIP  
Play: x1  
Fast Forward / Reverse: x2, x4, x8, x16, x32, Max  
Slow: 1/2, 1/4, 1/8, 1/16, 1/32, Max  
Time, Event, Channels

Search Mode

## Storage

Interface Type  
Max Capacity of 1 HDD  
Max HDD Number  
File System

EIDE / ATA133  
1TB  
4  
NaFS (Developed & designed for anti-breakage against power failure)

## Backup

Backup  
File Type

USB 2.0 Port / Network / CD-RW / DVD-RW (Optional)  
Still Image (Water-marked), AVI

## User Interface

Menu Display  
Input Method

Graphic User Interface (GUI)  
Front Keypad, Remote Controller

## Serial Port

Console & External Modem  
Camera Control

1 x RS-232C (9pin D-SUB connector)  
1 x RS-485/422 (4 Terminal Block)

## Network

Dynamic IP Support  
Network Interface  
Network Control  
Network Client Software

Yes  
10/100 base-T Ethernet Port (RJ-45)  
IE Browser / Network Client Software / CMS Software  
Live / Search / Backup / Setup / Upgrade / Camera Control

## Additional Functions

DLS (Day Light Saving)  
Multi-Language  
Software Upgrade

Yes  
Yes  
USB Memory Stick, Network

## General

Unit Weight  
Operation Temperature  
Relative Humidity  
Power Source

6kg (package w/o HDD)  
0°C ~ 40°C  
5% ~ 85% Non-condensing  
AC 100 ~ 127V / 200 ~ 240V, 50 – 60Hz

## COMPATIBLE DEVICES

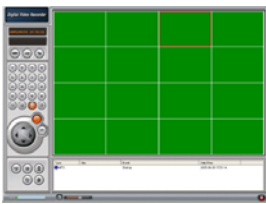


WTX-1200  
3Axis Keyboard Controller for PTZ and DVRs.

## NETWORK FEATURES



A highly efficient Video Analysis Central Monitoring Software (Optional) that provides video monitoring and management of multiple sites at 1 time.



Network Client Viewer Software provides Remote Monitoring, Playback, Management of Video Data.



Remote Video Monitoring and Management on the Internet Explorer by IP / DDNS addressing.

## PRODUCT ILLUSTRATION

